

DATA SHEET

In-line SPD for Coaxial & RF Systems

RayDat CP F75 Series**C1 • C2 • C3**

IEC/EN Category: C1/C2/C3
 Surge Discharge Ratings: I_n : 10 kA, I_{max} : 20 kA
 Max. Operating Voltage: 70, 180V
 Maximum Peak Power: 40, 125W
 Frequency Range: DC–2.0GHz
 Impedance: 75Ω
 Insertion Loss: <0.4 dB
 Return Loss: >20 dB
 Termination: F Type (F-F, M-F)
 Housing: In-line Installation, Shielded Enclosure
 Compliance: IEC/EN 61643-21

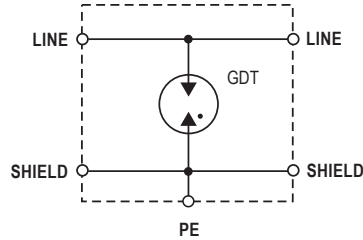
**Technical Data**

CP F75	70	180	
Electrical			
Maximum Continuous Operating Voltage	U_c	70V	180V
Maximum Peak Power	P_{max}	40W	125W
C2 Nominal Discharge Current (8/20μs)	I_n		10 kA
Maximum Discharge Current (8/20μs)	I_{max}		20 kA
Residual Voltage at (1 kV/μs)	U_{res}	<600V	<700V
Impedance	Z		75Ω
Insertion Loss	I_L		<0.4 dB
Return Loss	R_L		>20 dB
Insulation Resistance of Protection	R_{iso}		>10 GΩ
Frequency Range	f_G		0–2.0 GHz
Mechanical			
Temperature Range		-40 °F to +176 °F [-40 °C to +80 °C]	
Connection		F Female/Female	F Male/Female
Degree of Protection IEC/EN 60529		IP20 (built-in)	
Housing Material		Metal	
Order Information			
Order Code	70	180	
CP F75-FF-xxx	800 875	800 876	
CP F75-MF-xxx	800 877	800 878	

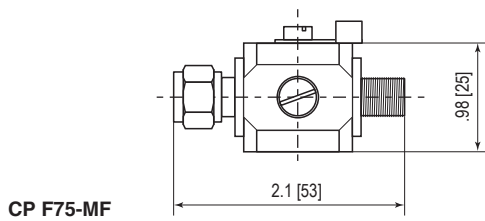
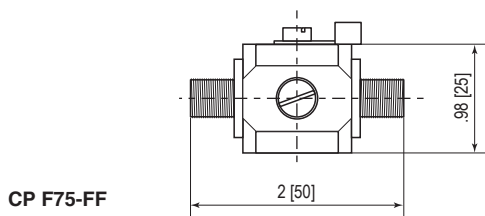
RayDat CP F75 Series

Internal Configuration

Legend
 GDT Gas Discharge Tube
 PE Ground



Dimensions & Packaging



CP F75	CP F75-FF		CP F75-MF	
	70	180	70	180
Dimensions				
Weight per Unit	2.82 oz [80 g]		2.96 oz [84 g]	
Packaging Dimensions (Single Unit)	2.8 x 1.2 x 1.2" [73 x 30 x 30 mm]			
Minimum Package Quantity	100 pieces			

inches
[mm]

Information contained in this document is subject to change at any time without notice.

RoHS
COMPLIANT  

Raycap

www.raycap.com

© 2020 Raycap All rights reserved.
G29-00-056 201120